



# TRACK LOADERS



**1650RT ▲ 1750RT NXT3 ▲ 2100RT NXT3 ▲ 2500RT NXT3 ▲ 3200VT**



# A LEGACY OF INNOVATION



**WHAT BEGAN IN THE 19TH CENTURY AS AN AGRICULTURAL IMPLEMENT MANUFACTURER HAS GROWN INTO A 21ST CENTURY EQUIPMENT POWERHOUSE - MUSTANG COMPACT EQUIPMENT.**

Known in the early years as the Owatonna Manufacturing Company, Mustang was among the first to make what is known today as the skid steer loader. Since that time, Mustang has combined old-school experience with innovative processes to offer one of the broadest lines of compact equipment available today.

**MUSTANG. THE ORIGINAL WORKHORSE.**



# BLAZING A NEW TRAIL

Since breaking into the track loader market in 2001, Mustang has learned a thing or two about what it takes to be an industry leader. Combine this expertise with input from some of the market's heaviest track loader users, and you get the RT Series Track Loaders from Mustang.

With many industry-exclusive features, including the patented IdealAccess™ Fold-Up Door and IdealTrax™ Automatic Track Tensioning System, the 1650RT, 1750RT NXT3, 2100RT NXT3, 2500RT NXT3, and 3200VT will blaze a new trail in the track loader market.

**IdealTrax** | **IdealAccess**



1650RT



1750RT NXT3



2100RT NXT3



2500RT NXT3



3200VT



# LIFT ARM

▲ **RADIAL-LIFT** and ▲ **VERTICAL-LIFT**

## TWO DESIGNS - ENDLESS POSSIBILITIES

### **RADIAL-LIFT DESIGN**

Offers enhanced performance in excavating, grading and digging below grade applications.

Due to the radial lift path, the maximum reach is greater at the middle of the lift height.



### **EXCELLENT FORWARD REACH**

The Mustang radial-lift track loaders provide excellent forward reach at the middle of the lift path. This provides high performance for loading flatbed trucks, backfilling or dumping over a wall.





## VERTICAL-LIFT DESIGN

Providing more reach at full lift height is optimal for applications that require loading and stacking at high heights. By keeping the load closer to the machine, lift capacities are increased over radial-lift models.



## TRUE VERTICAL

The 3200VT has a true vertical lift path of almost 11 feet.



## REAR VISIBILITY

Rear lift arm support bar is positioned out of the sight line as the lift arm is raised. This allows for excellent visibility to the rear through the entire lift cycle.



# PERFORMANCE

▲ POWER and ▲ PERFORMANCE

## ALL-NEW 1650RT: THE GAME CHANGER

### IDEALTRAX™ AUTOMATIC TRACK TENSIONING SYSTEM

Eliminate daily tension checks and costly track replacements with the IdealTrax™ system. Tracks are automatically tensioned when the engine is started and during operation. Tension is released when the engine is shut off.

### HIGH BREAKOUT FORCES

TILT 4,230 lbs. (1919 kg)

LIFT 5,060 lbs. (2295 kg)

### TIER IV ENGINE

POWER 69.3 hp (51.7 kW)

TORQUE 178 ft.-lbs. (241Nm)



### CHOICE OF CONTROLS

Choose between pilot joystick, T-bar, or hand/foot controls to suit operator preference. A conversion kit is available for the pilot dual-hand control system.

### RATED OPERATING CAPACITY

1650RT

1,650 lbs. (794 kg)







### ADAPTED SKID LOADER CHASSIS

Custom built to aid in superior weight distribution, which enhances stability, grading, tractive effort, and ride control.



### COUNTERWEIGHT/BUMPER

Gain extra tipping capacity while offering increased rear protection.

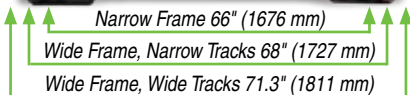
*Optional on the 1650RT*

### GROUND CLEARANCE

1650RT 7.3" (185 mm)

### LIFT HEIGHT

1650RT 119.6" (3038 mm)



### MACHINE WIDTH OPTIONS

The 1650RT has a width of 71.3" (1811 mm) when outfitted with wide tracks and 68" (1727 mm) with the narrow track option.

For applications needing a more compact machine, a narrow frame is available to special order with a 66" (1676 mm) overall width.



### OPTIMIZED RADIAL LIFT ARM

Durable design provides increased strength and up to 119.6 (3038 mm) of lift height.



# PERFORMANCE

▲ **POWER** and ▲ **PERFORMANCE**

## ROUGH GROUND - YOU HAVE MET YOUR MATCH

### PERFORMANCE DRIVEN DESIGN

The Mustang RT Series Track Loaders raise the bar with class-leading tractive effort and ground clearance. Paired with impressive breakout forces, these machines are your greatest allies on the job.



### FOLD-UP DOOR

This patented new design provides cab-to-canopy versatility, all while maintaining low clearance and a Level II FOPS certification.

### IDEALTRAX™ INDUSTRY-EXCLUSIVE AUTOMATIC TRACK TENSIONING SYSTEM

Eliminate daily tension checks and costly track replacements with the IdealTrax™ system. Tracks are automatically tensioned when the engine is started and during operation. Tension is released when the engine is shut off.

### SWITCHABLE CONTROLS

The operator can switch the controls from joystick to dual hand effortlessly.

*1750RT NXT3, 2100RT NXT3, 2500RT NXT3*

### TRAVEL SPEED LIMIT OPTION

Lowers maximum speed and allows full joystick movement. Operate hydraulically powered attachments at full speed with slow, controlled precision.



### TIER IV DIESEL ENGINES

1750RT NXT3	69.3 hp [51.7 kW]	179 ft.-lbs. [242.7 Nm]
2100RT NXT3	72 hp [53.7 kW]	217 ft.-lbs. [294 Nm]
2500RT NXT3	74.3 hp [55.4 kW]	243 ft.-lbs. [330 Nm]

### RATED OPERATING CAPACITY at 35% tip capacity

1750RT NXT3	1,750 lbs. [794 kg]
2100RT NXT3	2,100 lbs. [953 kg]
2500RT NXT3	2,500 lbs. [1134 kg]





### DEDICATED, WELDED TRACK LOADER CHASSIS

Custom built to aid in superior weight distribution, which enhances stability, grading, tractive effort, and ride control.



### COUNTERWEIGHT/BUMPER

Gain extra tipping capacity while offering increased rear protection.

*Optional on the 1750RT NXT3 and 2100RT NXT3. Standard on the 2500RT NXT3. Additional side-mounted counterweights optional on 2500RT NXT3.*

### GROUND CLEARANCE CLASS-LEADING

1750RT NXT3	13.1" [333 mm]
2100RT NXT3	13.2" [335 mm]
2500RT NXT3	13.2" [335 mm]

### LIFT HEIGHT CLASS-LEADING

1750RT NXT3	128" [3251 mm]
2100RT NXT3	128" [3251 mm]
2500RT NXT3	128" [3251 mm]

### HORSEPOWER MANAGEMENT SYSTEM

Monitors and adjusts the hydrostatic drive pump to produce the ideal tractive effort.



### OPTIMIZED RADIAL BOOM

Durable design provides increased strength and up to 128" (3251 mm) of lift height – higher than competitors with similar rated operating capacities.

### STRAIGHT TRACKING

Programmed with a switch, straight tracking provides for simple in-cab operator adjustments when needed.





# PERFORMANCE

▲ POWER and ▲ PERFORMANCE

## ALL-NEW 3200VT: SUPER SIZE YOUR FLEET

### IDEALTRAX™ INDUSTRY-EXCLUSIVE AUTOMATIC TRACK TENSIONING SYSTEM

Eliminate daily tension checks and costly track replacements with the IdealTrax™ system. Tracks are automatically tensioned when the engine is started and during operation. Tension is released when the engine is shut off.

### INCREASED BREAKOUT FORCES

Class-leading lift breakout force and high tilt breakout force give you the power needed to break up a pile of dirt or remove tree stumps.

	TILT	LIFT
3200VT	9,901 lbs. (4491 kg)	7,491 lbs. (3398 kg)

### IdealAccess™



### FOLD-UP DOOR

The Mustang patented design provides cab-to-canopy versatility, all while maintaining low clearance and a Level II FOPS certification.



### PILOT JOYSTICK CONTROLS

The hydraulic-pilot controls found in the Mustang skid steer loader line control the all-new 3200VT track loader. By mounting the controls to the seat, they move with the operator.

### RATED OPERATING CAPACITY

3200VT      3,200 lbs. (1452 kg)

### TIER IV ENGINES

3200VT

### POWER

114 hp (85 kW)

### TORQUE

339.3 ft.-lbs. (460 Nm)





### DEDICATED, WELDED TRACK LOADER CHASSIS

Custom built to aid in superior weight distribution, which enhances stability, grading, tractive effort, and ride control.



### COUNTERWEIGHT/BUMPER

Standard rear bumper protects the rear of the machine. Optional side-mounted counterweights provide additional operating capacity.

*Standard on the 3200VT. Additional side-mounted counterweight is optional on the 3200VT model.*

### LIFT HEIGHT

3200VT 130" (3302 mm)



### GROUND CLEARANCE

3200VT 12.2" (310 mm)

### VERTICAL LIFT ARM

The vertical lift path design maintains the forward reach at full lift height. This is ideal for applications that require loading and placement of materials.



### ADD VERSATILITY

Lift arms stops are adjustable for added attachment versatility.



# OPERATOR STATION

▲ COMFORT and ▲ SAFETY

## OPERATOR STATION COMFORT FEATURES



### REAR VIEW CAMERA

Increase visibility to the rear of the machine with a rear view camera.



### RADIO OPTION

Factory-installed, this AM/FM deluxe radio option customizes the cab.



### CLIMATE CONTROL

Heat is standard on all cab models. Upgrade to air conditioning for additional comfort.



### INTEGRATED LCD DISPLAY

Easy-to-use, multi-function display incorporates all warning/operation lights and machine configuration screens. Single button allows for simple scrolling and selection of various display functions.

*1650RT / 3200VT shown*

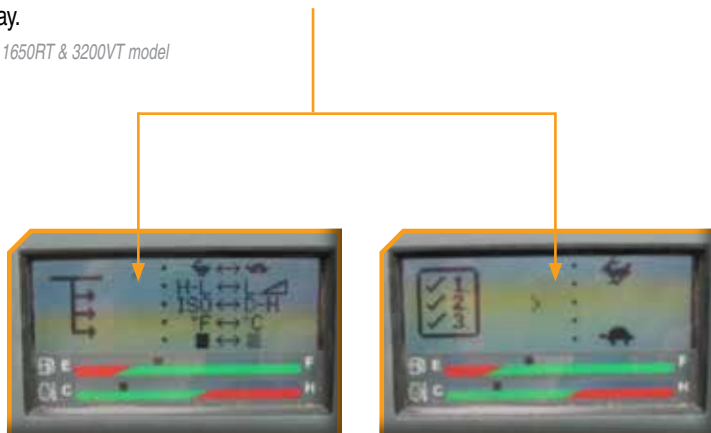
### STRAIGHT TRACKING

Tracking is easily corrected from the cab using the display. It can also be used to compensate for offset or side-loaded attachments.

## DRIVE SENSITIVITY ADJUSTMENT

Five settings are available to adjust the operator drive speeds and response times. Each user can customize the control to their preference using the LCD display.

*Except on the 1650RT & 3200VT model*



Drive Sensitivity Adjustment	Operator Feel Emulation
<b>5 - Rabbit</b>	+ 20% = <b>Fastest</b> • Highly Responsive • Highest Volume
<b>4 - ●</b>	+ 10% = <b>Quick</b> • Very Responsive • Control
<b>3 - ●</b>	<b>Standard Setting</b> • Normal Response Time • Focused Productivity
<b>2 - ●</b>	- 10% = <b>Precision</b> • Improved Control
<b>1 - Turtle</b>	- 20% = <b>High Precision</b> • Easy Control • More Precise





EH controls

Pilot controls

### ELECTRIC ATTACHMENT CONTROL

This factory-installed option controls multi-function attachments directly through the joystick.

### PREMIUM SEAT

Standard deluxe, high-back mechanical suspension seat or an optional air-ride seat for operator comfort.

### CREATURE COMFORTS

Dome light, cup holder, two 12-volt outlets, and multiple adjustable air vents.

### OPERATOR PRESENCE

Brakes are applied and hydraulics are disabled whenever the operator raises the restraint bar, leaves the seat or switches off the ignition.

3200VT Pilot Controls

### VISIBILITY

A cab-forward design enhances the view to the bucket cutting edge from the operator's seat. Extra-large side screens, combined with a low-profile lift arm design, provide a wide field-of-view to the side work areas.

### PRESSURIZED CAB

Optional, pressurized sealed cab enclosure with sound reduction material and large, rear-mounted cabin air filter provides a cleaner and quieter operating environment.

### ARMRESTS/RESTRAINT BARS

All instrumentation and fully adjustable joystick control towers are conveniently located on the armrests for easy access. High-mounted restraint bars provide ample clearance for the operator's legs.



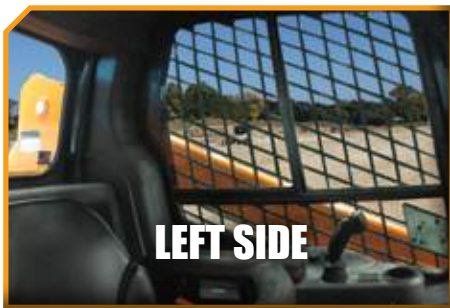
# SERVICE & SAFETY

▲ MAINTENANCE and ▲ SAFETY

**EXCELLENT VISIBILITY**

**FRONT**

*RT Series EH Controls*



*RT Series NXT3 cab shown*

## **EXCELLENT VIEWS FROM ALL SIDES FOR SAFETY AND PRECISE OPERATION**

Excellent visibility to the front, sides and rear of the machine allow for precise placement of loads and reduced jobsite incidents. A high-mounted seat provides an excellent vantage point to the attachment and cutting edge.



# LESS DOWNTIME PUTS MONEY IN YOUR POCKET

## IDEALTRAX™ INDUSTRY-EXCLUSIVE AUTOMATIC TRACK TENSIONING SYSTEM

Eliminates the need for manually tensioning the tracks on the loader before operation, saving valuable time on the jobsite.

Increases the life of the tracks (up to 15%\* in tested conditions), sprockets and bearings by ensuring the proper tension immediately upon start-up and during use, and tension release when the machine is shut down.

Track changes in the field are facilitated with a simple switch in the rear compartment. Removing a track without the IdealTrax™ system can take up to one hour per track. With IdealTrax™, it takes just minutes.

\*Track life improvement varies greatly depending on conditions, application and upkeep; results may vary.



ENGINE NOT RUNNING



ENGINE RUNNING

## 17-TOOTH SPROCKETS

17-tooth, forged drive sprockets have 40% more hardness depth for improved sprocket life. Larger sprockets increase track-to-chassis clearance, so tracks can be cleaned out with ease.



### ENGINE ACCESS

Full access to filters and reservoirs for servicing and maintenance is made possible by a swing-out rear door and a large, lockable engine cover.

### TILTABLE ROPS/FOPS ASSEMBLY

Featuring gas-spring assist for easy internal access to the pumps, hydraulic valve bank and drive motors.

### SAFETY RESTRAINT

Innovative restraint allows for secure positioning of the cab in the maintenance position. Restraint can be secured in position by one person.

### TILT-OUT FOOT POD

This feature allows for best-in-class foot well cleanout and provides perfect access to the fuel tank and other components under the cab.

Except on the 1650RT





## CUSTOMIZE YOUR RIDE.

Mustang offers a variety of accessories and upgrades that can be easily added to new or used equipment. These can help enhance an existing unit or customize one for a particular job. Whether you are looking to add a counterweight, boost your hydraulics, or enclose a cab to add heat and air conditioning, Mustang has the options you need to craft your ideal ride.

### TRACK OPTIONS



### CAB ENCLOSURES



### HYDRAGLIDE™



### CONTROLS (RT165)



### SWITCHABLE SELF-LEVEL



### RADIO



### AIR CONDITIONING



### HIGH-FLOW HYDRAULICS



### POWER-A-TACH®



### REAR VIEW CAMERA



### COUNTERWEIGHT



### FOLD-UP DOOR



*not available on 1650RT*

# PROTECT YOUR INVESTMENT.

Trust the experts.  
Make the *right* choice.

You expect year-to-year productivity from your Mustang equipment. That's why your trained and accredited Mustang dealer offers you the experience and skill necessary to maximize your equipment's performance. From routine maintenance to XPRT Genuine Parts to XPRT Protection Plan, your Mustang dealer is a partner you can count on to keep your equipment running smoothly.



## ROUTINE Maintenance



Eliminate unexpected repair costs and take better care of your Mustang equipment with the XPRT Protection Plan®. It ensures repairs will be made quickly with manufacturer-approved XPRT genuine parts by trained mechanics. If you're interested in saving money over the long haul, the XPRT Protection Plan® is an investment you should consider.

Features include:

- Affordable options available to meet your needs
- Select either powertrain component or full machine coverage for the right kind of protection for your equipment
- You decide the number of years and hours of coverage needed
- Enroll in the Plan on the day you purchase eligible equipment, or any time within six months or 500 hours from equipment registration





# MARKETS & ATTACHMENTS

## ▲ ATTACHMENTS

### NEED VERSATILITY?

Compatible with most allied loader attachments, the RT Series Track Loaders from Mustang provide superior loader functionality while minimizing damage to ground surfaces. Perfect for landscape, agriculture, construction or rental - these machines are up for any challenge.



# EDGE

▲ Std. Flow ▲ High Flow ▲ Available accessories

**B  
E  
S  
T  
  
S  
E  
L  
L  
E  
R  
S**

	1650RT	1750RT NXT3	2100RT NXT3	2500RT NXT3	3200VT
<b>AUGERS - CHAIN DRIVE</b>					
1650 CL Auger Drive - Round - 2 9/16" (65 mm)	▲	▲	▲	▲	
1650 CLH Auger Drive - Hex - 2" (51 mm)	▲	▲	▲	▲	
<b>AUGERS - PLANETARY DRIVE</b>					
PA 210 Planetary Auger Drive - Round - 2 9/16" (65 mm)	▲	▲	▲	▲	▲
PA 220H Planetary Auger Drive - Hex - 2" (51 mm)	▲	▲	▲	▲	▲
<b>AUGER - BITS</b>					
SQ 9" (229 mm) Auger Bit - Round - 4 teeth - 2 9/16" (65 mm)	▲	▲	▲	▲	▲
SQ 12" (305 mm) Auger Bit - Round - 4 teeth - 2 9/16" (65 mm)	▲	▲	▲	▲	▲
SQ 9" (229 mm) Auger Bit - Hex - 4 teeth - 2" (51 mm)	▲	▲	▲	▲	▲
SQ 12" (305 mm) Auger Bit - Hex - 4 teeth - 2" (51 mm)	▲	▲	▲	▲	▲
SQ 18" (457 mm) Auger Bit - Hex - 6 teeth - 2" (51 mm)	▲	▲	▲	▲	▲
<b>BRUSH MOWER</b>					
Standard Flow Rotary Brush Mowers - 48", 60", 66", 72", 78"	▲	▲	▲	▲	▲
High Flow Rotary Brush Mowers - 72", 78", 90"	▲	▲	▲	▲	▲
<b>PALLET FORKS</b>					
Pallet Fork Frame - Heavy Duty - Requires two tines Can customize with dealer name (on orders of 10 or more)	▲	▲	▲	▲	▲
Heavy Duty Class II Tine 48" (1219 mm)	▲	▲	▲	▲	▲
Side Shift pallet Fork with 48" (1219 mm) Tines	▲	▲	▲	▲	▲
Sliding Tine Pallet with 48" (1219 mm) Hydraulic Sliding Tines	▲	▲	▲	▲	▲
<b>LOG GRAPPLES</b>					
Log Grapple	▲	▲	▲	▲	▲
<b>GRADER BLADES</b>					
8" (203 mm) Grader Blade with proportional current valve	▲	▲	▲	▲	▲
<b>RAKES</b>					
76" (1930 mm) Auto Rake	▲	▲	▲	▲	▲
82" (2083 mm) Grader Rake	▲	▲	▲	▲	▲
76" (1930 mm) Preparator Rake	▲	▲	▲	▲	▲
90" (2286 mm) Power Rake with hydraulic angle	▲	▲	▲	▲	▲
<b>MULCHER</b>					
48" (1219 mm) Brush Mulcher	▲	▲	▲	▲	
<b>ROCK WHEEL</b>					
Rock Wheel with 4.5" (114 mm) wheel, Dual Circuit		▲	▲	▲	▲

**A WIDE VARIETY OF EDGE ATTACHMENTS ARE AVAILABLE FROM YOUR MUSTANG DEALER.**

To learn more about EDGE® Track Loader attachments, please visit [edgeattach.com](http://edgeattach.com)



# GET ATTACHED



## MULTI-TACH®

All models feature the easy-to-use All-Tach® (universal-style) attachment mounting system compatible with most allied attachments.

- **SINGLE LEVER DESIGN** for simplicity and strength.
- **HEAVY DUTY MOUNTING PLATE** design for increased rigidity over tube style.



## POWER-A-TACH®

Power-A-Tach® all-weather system option allows users to quickly install and remove attachments. An operator leaves the seat only to connect auxiliary hydraulics. This system is compatible with most allied attachments.

○ STANDARD ● OPTIONAL

	1650RT	1750RT NXT3	2100RT NXT3	2500RT NXT3	3200VT
<b>PERFORMANCE</b>					
All-Tach® Mounting System	○	○	○	○	○
IdealTrax™ Automatic Track Tensioning System	○	○	○	○	○
Straight Tracking		○	○	○	
Power-A-Tach® Mounting System	●	●	●	●	●
Selectable Self-Leveling Lift Action	●	●	●	●	●
Two-speed Hydrostatic Drive System	○	○	○	○	○
Horsepower Management System		○	○	○	
<b>ENGINE</b>					
Engine Alert System with Error Display	○	○	○	○	○
Engine Automatic Shutdown System	○	○	○	○	
Glowplugs Starter Assist	○	○	○	○	○
Dual-Element Air Cleaner with Indicator	○	○	○	○	○
ECO Mode					○
<b>HYDRAULICS</b>					
Auxiliary Hydraulics	○	○	○	○	○
High-Flow Auxiliary Hydraulics	●	●	●	●	●
<b>UNDERCARRIAGE</b>					
Elevated Planetary Final Drives	○	○	○	○	○
Maintenance Free Rollers Each Side	3	3	4	4	4
Single Flange Front/Dual Flange Rear Idlers	○	○	○	○	○
Rubber Track Undercarriage System	○	○	○	○	○
Servo-Controlled Hydrostatic Drive	○	○	○	○	○
Dedicated Undercarriage		○	○	○	○
<b>STRUCTURE</b>					
Tilt-out Foot Pod		○	○	○	○
Back-up Alarm	●	○	○	○	○
Combination Radiator & Hydraulic Oil Cooler	○	○	○	○	○
ROPS/FOPS Level II Overhead Guard	○	○	○	○	○
Anti-Vandalism Lock Provisions	○	○	○	○	○
Mechanical Lift Cylinder Lock	○	○	○	○	○
<b>OPERATOR STATION</b>					
Pressurized Cab Enclosure with A/C	●	●	●	●	●
Fold-Up Door		●	●	●	●
Multi-Function Function Display Screen	○	○	○	○	○
Drive Sensitivity Adjustment		○	○	○	
Electronic Attachment Control - 14-Pin Connector	●	●	●	●	●
Electro-Hydraulic Joystick Controls		○	○	○	
Selectable Control Pattern Configuration (ISO / Dual-Hand)		●	●	●	
Variable Speed Control, Selectable On & Off		●	●	●	
Foot Throttle	○	○	○	○	○
Full-Suspension Seat	○	○	○	○	○
Air Suspension Seat	●	●	●	●	●



# SPECIFICATIONS

# track loaders - RT SERIES

	1650RT	1750RT NXT3	2100RT NXT3	2500RT NXT3	3200VT	
DIMENSIONS	A. Overall Operating Height – Fully Raised (mm)	157.8" (4008)	168" (4267)	168" (4267)	168" (4267)	169" (4293)
	B. Height to Hinge Pin – Fully Raised (mm)	119.6" (3038)	128" (3251)	128" (3251)	128" (3251)	130" (3302)
	C. Reach – Fully Raised (mm)	25.3" (641)	34.5" (876)	34.5" (876)	34.5" (996)	40.4" (1026)
	D. Dump Angle – Fully Raised	39°	40.2°	39°	41°	41°
	E. Dump Height – Fully Raised (mm)	91.7" (2329)	98" (2489)	98" (2489)	98" (2489)	99.6" (2530)
	F. Maximum Rollback Angle – Fully Raised	98°	102.5°	102.5°	102.5°	90°
	G. Overall Height at ROPS (mm)	77.5" (1969)	83" (2103)	83.1" (2111)	83.1" (2111)	83.1" (2111)
	H. Overall Length w/ Bucket – Std. c-wt. (mm)	126.2" (3205)	144.0" (3658)	148.1" (3762)	157.8" (4008)	159.8" (4059)
	I. Overall Length w/o Bucket – Std. c-wt. (mm)	94.2" (2393)	110.8" (2814)	116.5" (2959)	126.8" (3221)	127.7" (3243)
	J. Specified Height (mm)	64.5" (1638)	67.5" (1715)	67.7" (1720)	67.7" (1720)	76.3" (1938)
	K. Reach at Specified Height (mm)	22" (559)	31.1" (790)	31.3" (795)	31.3" (795)	29.6" (751)
	L. Dump Angle at Specified Height	73°	75°	75°	75°	68°
	M. Maximum Rollback Angle at Ground	28°	30°	30°	30°	31°
	N. Carry Position (mm)	7.8" (198)	8.2" (208)	8.2" (208)	8.2" (208)	7.8" (199)
	O. Maximum Rollback Angle at Carry Position	28°	31.6°	31.6°	31.6°	31°
	P. Digging Position – Below Ground (mm)	2.1" (53)	+0.9" (23)	+0.6" (16)	+0.5" (13)	+0.74" (19)
	Q. Angle of Departure with Std. c-wt.	28°	30.4°	29.2°	25°	24°
	R. Ground Clearance (mm)	7.3" (185)	13.1" (333)	13.2" (335)	13.2" (335)	12.2" (309)
	S. Track Gauge (mm)	53.4" (1356)	51.7" (1313)	51.7" (1313)	51.7" (1313)	51.7" (1313)
	T. Track Shoe Width (mm)	12.6" (320)	12.6" (320)	17.7" (450)	17.7" (450)	17.7" (450)
	U. Crawler Base (mm)	49.8" (1265)	54.8" (1392)	58.4" (1483)	61.5" (1562)	61.8" (1570)
	V. Overall Width – Less Bucket (mm)	66.0" (1676)	64.4" (1636)	69.5" (1765)	69.5" (1765)	69.5" (1766)
	W. Bucket Width (mm)	66.0" (1676)	65.9" (1674)	73.9" (1877)	83.9" (2131)	83.9" (2131)
	X. Clearance Radius – Front With Bucket (mm)	77.9" (1979)	91.4" (2322)	94.6" (2403)	98.4" (2499)	96.1" (2442)
	Z. Clearance Radius – Rear w/ Std. c-wt. (mm)	56.7" (1440)	62.1" (1577)	64.6" (1641)	70.7" (1796)	73.6" (1870)
	Maximum Rollback at Specified Height	62°	66.8°	66.8°	66.8°	64.5°
Angle of Approach	90°	90°	90°	90°	90°	
Grouser Height (mm)	1" (25)	1" (25)	1" (25)	1" (25)	1" (25.4)	
CAPACITY	Operating Capacity at 35% Tipping Load (kg)	1,650 lbs. (748)	1,750 lbs. (794)	2,100 lbs. (953)	2,500 lbs. (1134)	3,200 lbs. (1452)
	Operating Capacity at 50% Tipping Load (kg)	2,357 lbs. (1069)	2,500 lbs. (1134)	3,000 lbs. (1361)	3,571 lbs. (1620)	4,571 lbs. (2074)
	Tipping Load (kg)	4,715 lbs. (2139)	5,000 lbs. (2268)	6,000 lbs. (2722)	7,143 lbs. (3240)	9,143 lbs. (4148)
	Operating Weight (kg)	8,020 lbs. (3638)	8,605 lbs. (3903)	9,800 lbs. (4445)	11,470 lbs. (5203)	11,610 lbs. (5267)
ENGINE	Make/Model	Yanmar/4TNV98C-NMS2 Tier IV	Yanmar / 4TNV98C-NMSL Tier IV	Yanmar / 4TNV98CT-NMSL Tier IV	Deutz / TD 3.6 Tier IV	Deutz / TD 3.6 EPA Final Tier IV
	Type	4-Stroke Naturally Aspirated	4-Stroke Naturally Aspirated	4-Stroke Turbo	4-Stroke Turbo	4-Stroke Turbo
	Displacement (L) / cylinders	202.5 cu.in. (3.3) / 4	203 cu.in. (3.3) / 4	203 cu.in. (3.3) / 4	221 cu.in. (3.6) / 4	221 cu.in. (3.6) / 4
	Gross Power (kW) @ rpm	69.3 hp (51.7) @ 2500	69.3 hp (51.7) @ 2500	72 hp (53.7) @ 2500	74.3 hp (55.4) @ 2300	114 hp (85)
	Net Power (kW) @ rpm	68.4 hp (51.0) @ 2500	68.4 hp (51) @ 2500	70.7 hp (52.7) @ 2500	70.7 hp (52.7) @ 2300	108 hp (80.8)
	Peak Torque (Nm) @ rpm	178 ft.-lbs. (242.7) @ 1625	179 ft.-lbs. (242.7) @ 1600	206 ft.-lbs. (279.3) @ 1700	243 ft.-lbs. (330) @ 1500	339 ft.-lbs. (430 Nm)
	Oil Pan Capacity (L)	9.5 qts. (9)	11 qts. (10.4)	11 qts. (10.4)	9 qts. (8.5)	9 qts. (8.5)
Alternator Voltage / Amperage	12V / 100A	14V / 95A	14V / 95A	14V / 95A	14V / 95A	
TRACK DRIVES	Drawbar Pull / Tractive Effort (kg)	9,578 lbs. (4,345)	9,917 lbs. (4498)	11,489 lbs. (5211)	12,770 lbs. (5792)	12,770 lbs. (5792)
	Track Type / Track Rollers / Roller Type	Rubber / 4 / Steel	Rubber / 4 / Steel	Rubber / 5 / Steel	Rubber / 5 / Steel	Rubber / Steel
	Track Width (mm)	12.6" (320)	12.6" (320)	17.7" (450)	17.7" (450)	17.7" (450)
	Ground Pressure (bar)	6.5 / 5.2 psi (.45 / .36)	6.2 psi (0.43)	4.7 psi (0.32)	5.3 psi (0.37)	5.3 psi (0.37)
FORCES	Bucket Breakout – Tilt Cylinder (kg)	4,230 lbs. (1,919)	5,354 lbs. (2429)	6,631 lbs. (3008)	8,384 lbs. (3803)	9,901 lbs. (4492)
	Bucket Breakout – Lift Cylinder (kg)	5,060 lbs. (2295)	5,016 lbs. (2275)	6,481 lbs. (2940)	7,437 lbs. (3373)	7,491 lbs. (3398)
	Ground Speed – Single Speed (km/hr)	6.5 mph (10.5)	5.3 mph (8.5)	6.1 mph (9.8)	5.8 mph (9.3)	5.3 mph (8.6)
	Ground Speed – Two Speed (km/hr)	10.0 mph (16.1)	7.7 mph (12.4)	8.9 mph (14.3)	8.2 mph (13.2)	7.8 mph (12.6)
VOLUME	Fuel Tank (L)	16.5 gal. (62.5)	24 gal. (91)	24 gal. (91)	24 gal. (91)	32.5 gal. (123)
	Hydraulic Reservoir Tank (L)	10.3 gal. (39)	11.0 gal. (41.6)	13.8 gal. (52.2)	13.8 gal. (52.2)	16.5 gal. (62.5)
	Coolant Capacity (L)	3.4 gal. (12.9)	3.5 gal. (13.3)	3.8 gal. (14.4)	5.1 gal. (19.3)	5.1 gal. (19.3)
HYDRAULICS	Auxiliary Hydraulic Flow – Rated Speed (L/min)	18.7 gpm (71)	18.5 gpm (70.0)	21.8 gpm (82.5)	24.9 gpm (94.3)	27 gpm (102.2)
	High-Flow Hydraulic Flow – Rated Speed (L/min)	30.1 gpm (114)	34.0 gpm (128.8)	35.9 gpm (135.8)	37.4 gpm (141.6)	37.4 gpm (141.6)
	Transmission Pump Type	Axial Piston	Axial Piston	Axial Piston	Axial Piston	Axial Piston
	Motor Type	Radial Piston		Axial Piston with Planetary Gear Box Reduction		
BATTERY	Battery Volts	12V	12V	12V	12V	12V
	Cold Cranking Amps at Temperature	950 CCA @ 0°F (-18°C)	850 CCA @ 0°F (-18°C)	850 CCA @ 0°F (-18°C)	950 CCA @ 0°F (-18°C)	950 CCA @ 0°F (-18°C)

## ORIGINAL WORKHORSE

Mustang authorized dealers offer a full line of compact equipment, backed up by exceptional sales, service and parts experience.

Mustang reminds users to read and understand the operator's manual before operating any equipment. Also, make sure all safety devices and shields are in place and functioning properly.

Mustang reserves the right to add improvements or make changes in specifications at any time without notice or obligation.

For more information on Mustang equipment, visit [mustangmfg.com](http://mustangmfg.com)

### REFERENCE DIAGRAMS

